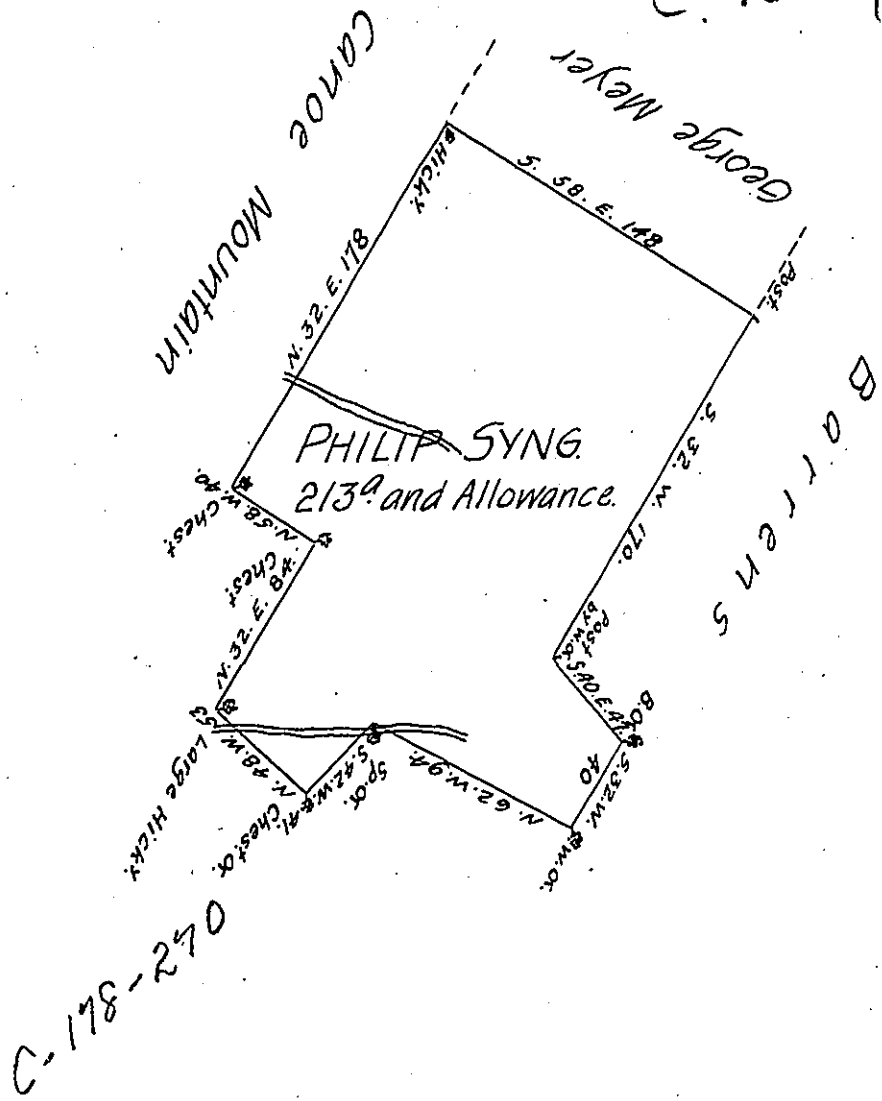


C. 1357



A Draught of a Tract of Land called the Sink Holes situate on the Path leading from the Canoe Place to Standing Stone on the first Water^e which run to the S. E. after rising the Hill from the Canoe Nam^o the foot of the Canoe Mountain adjoin^g S. W. of George Meyer's (o^bz) in Bane Township, in the County of Bedford. Containing two hundred & thirteen Acres and the usual Allowance of six $\frac{1}{2}$ Cent for Roads &c. Survey^d the 13th Day of November 177³ for Philip Syng in pursuance of a Warrant^d Dated the 25th Day of June in the ~~same~~ year, ~~by~~ 1773.

To John Lukens, Esq^r } Thomas Smith, D.S.
 Surveyor General &c }

N. B. The above Warrant is Located adjoining Valentine Leaser on Piny Cree (o^bz) which the owner of the several Warrants taken out the same Day on Piny Cree (o^bz) and when this Warrants & others of his are laid, says was thro' mistake & his no^t understanding English, by which he neglected to Alter the Location, when he found^d

that the Land for which he had at first intended it was applied for by Alexan^r Douglass which he knew before he went to the office & this appears to the Surveyor to be the Case. ^{Thomas Smith (o^bz)}

IN TESTIMONY that the above is a copy of the original remaining on file in the Department of Internal Affairs of Pennsylvania, made conformably to an Act of Assembly approved the 16th day of February, 1833, I have hereunto set my Hand and caused the Seal of said Department to be affixed at Harrisburg, this twelfth day of November 1906.

Joseph P. Brown
 Secretary of Internal Affairs.